



Rome1516_0002404.JPG



Rome1516_0002405.JPG



Rome1516_0002406.JPG



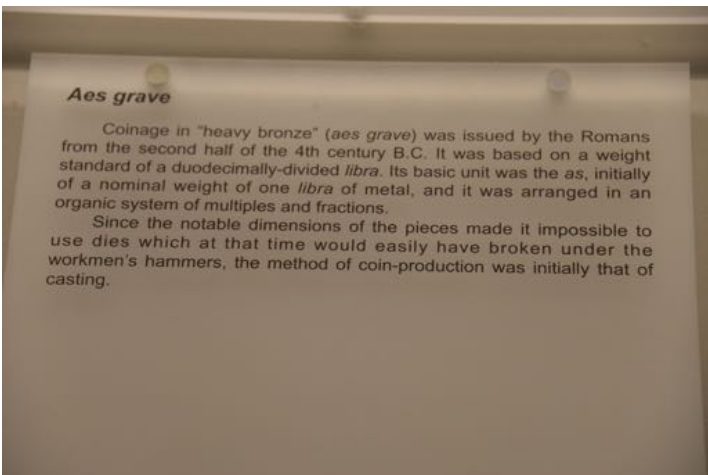
Rome1516_0002407.JPG



Rome1516_0002408.JPG



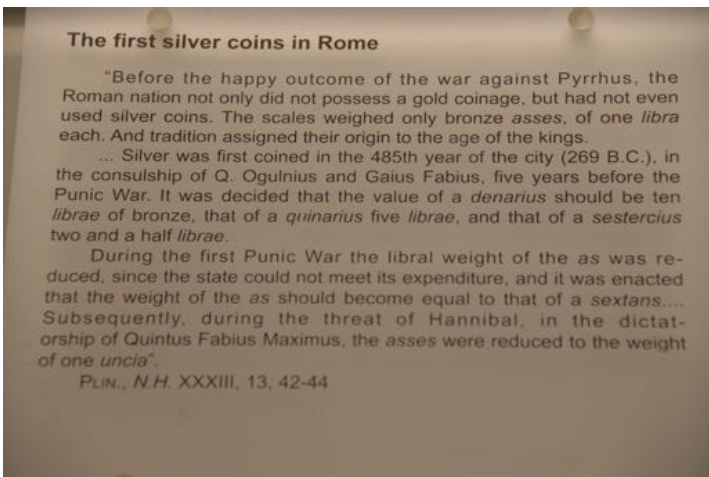
Rome1516_0002409.JPG



Rome1516_0002410.JPG



Rome1516_0002411.JPG



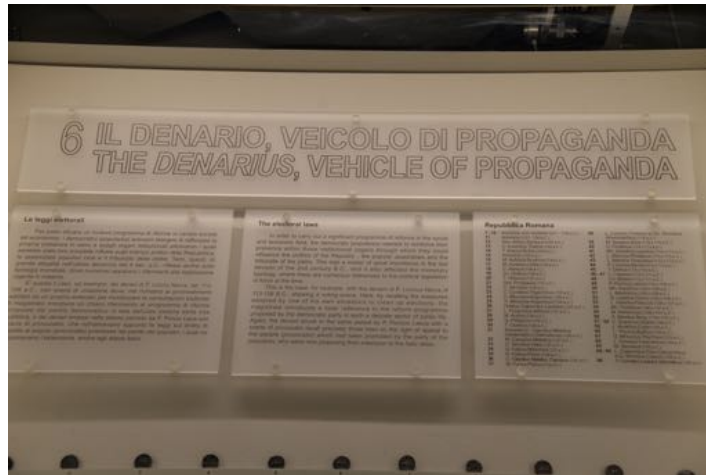
Rome1516_0002412.JPG



Rome1516_0002413.JPG



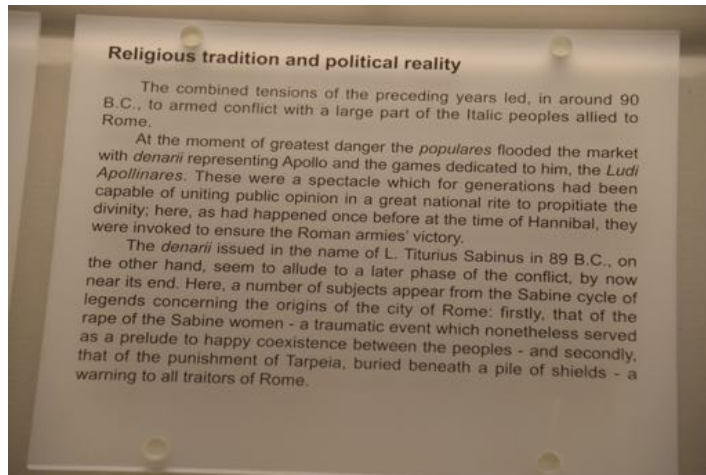
Rome1516_0002414.JPG



Rome1516_0002415.JPG



Rome1516_0002417.JPG



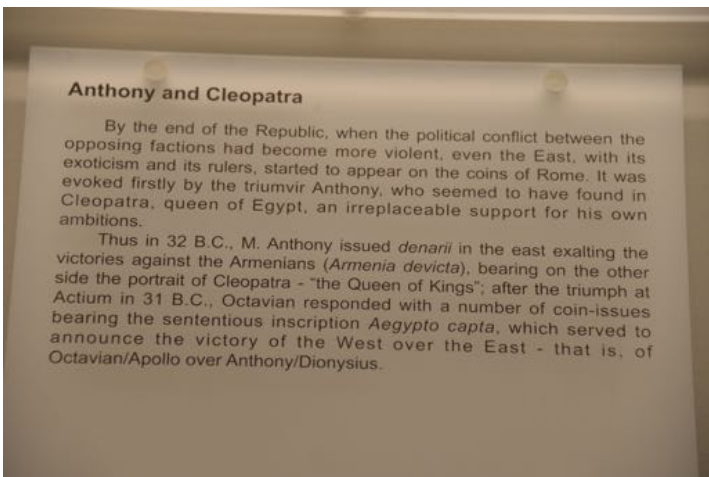
Rome1516_0002418.JPG



Rome1516_0002419.JPG



Rome1516_0002420.JPG



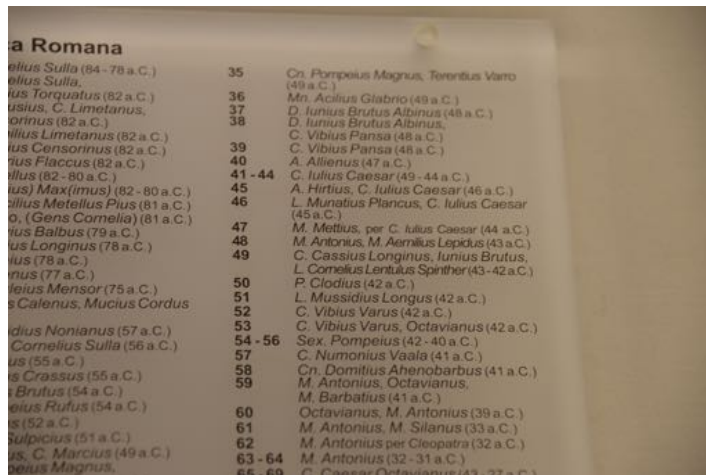
Rome1516_0002421.JPG



Rome1516_0002422.JPG



Rome1516_0002423.JPG



Rome1516_0002424.JPG



Rome1516_0002425.JPG



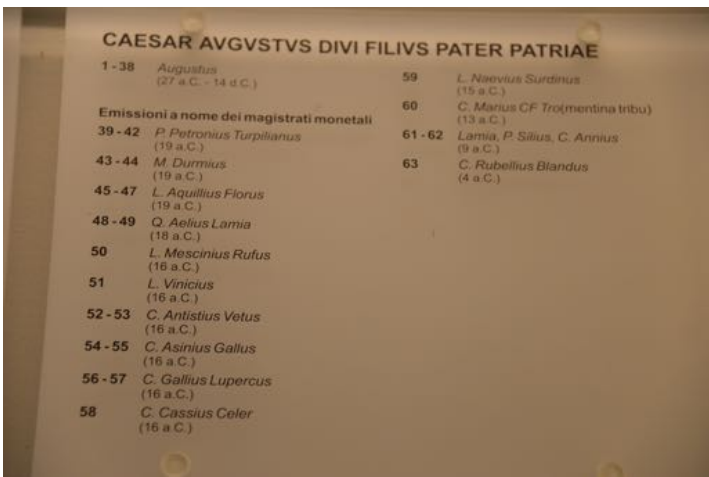
Rome1516_0002426.JPG



Rome1516_0002428.JPG



Rome1516_0002429.JPG



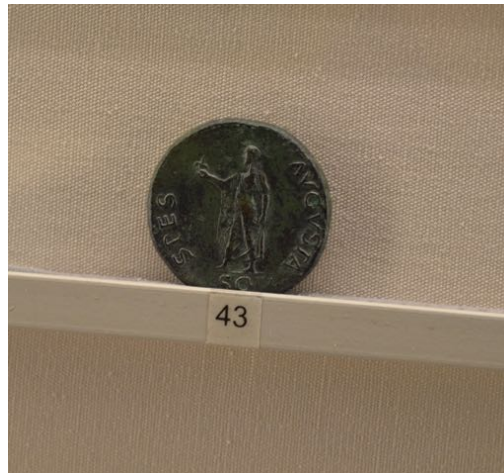
Rome1516_0002430.JPG



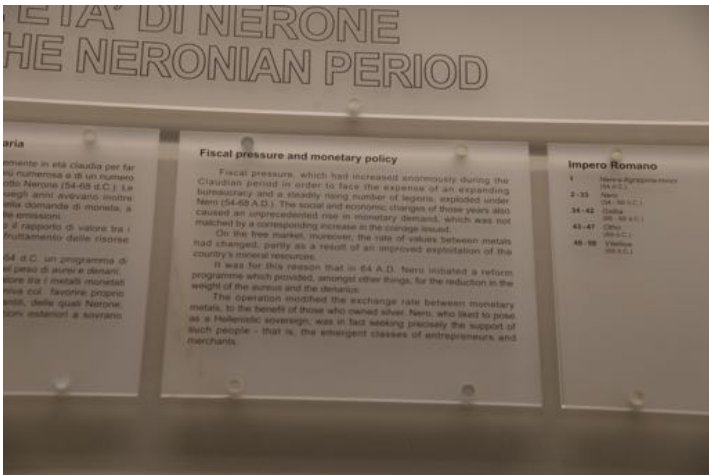
Rome1516_0002431.JPG



Rome1516_0002433.JPG



Rome1516_0002434.JPG



Rome1516_0002437.JPG



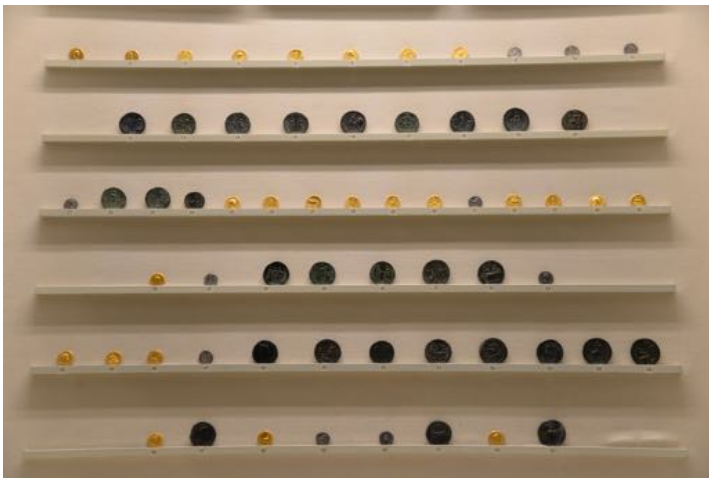
Rome1516_0002439.JPG



Rome1516_0002440.JPG



Rome1516_0002441.JPG



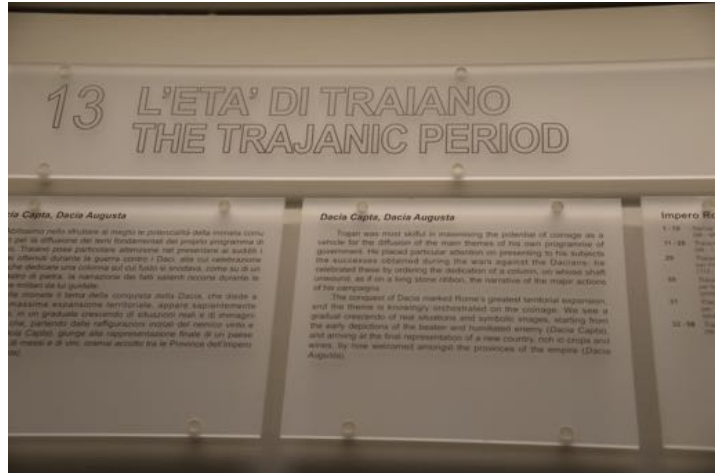
Rome1516_0002443.JPG



Rome1516_0002444.JPG



Rome1516_0002445.JPG



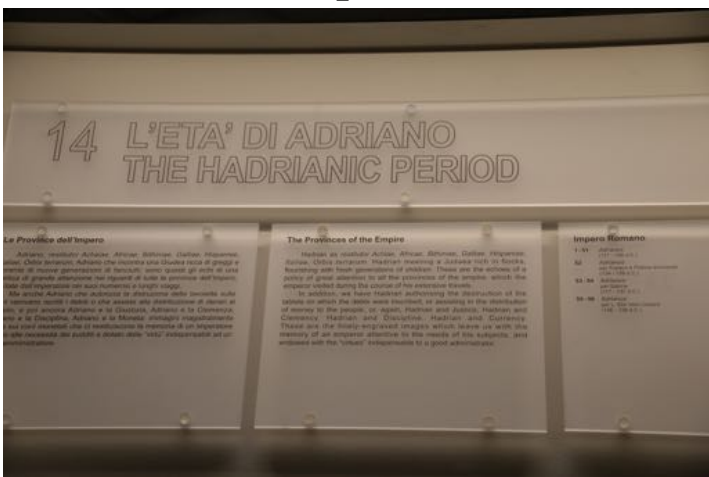
Rome1516_0002447.JPG



Rome1516_0002449.JPG



Rome1516_0002450.JPG



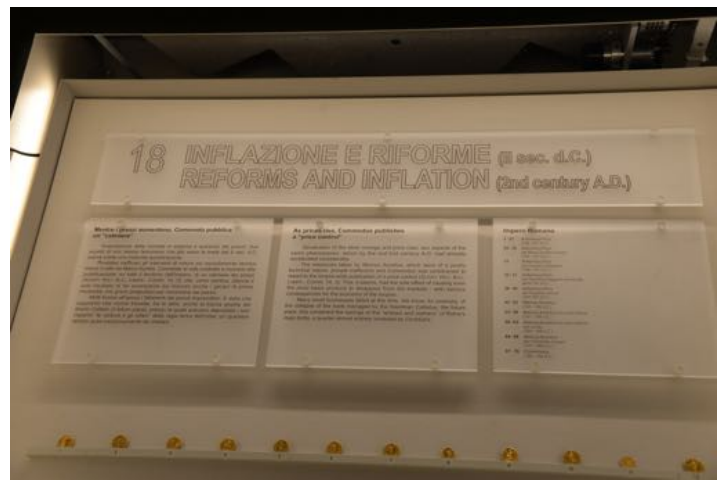
Rome1516_0002451.JPG



Rome1516_0002453.JPG



Rome1516_0002454.JPG



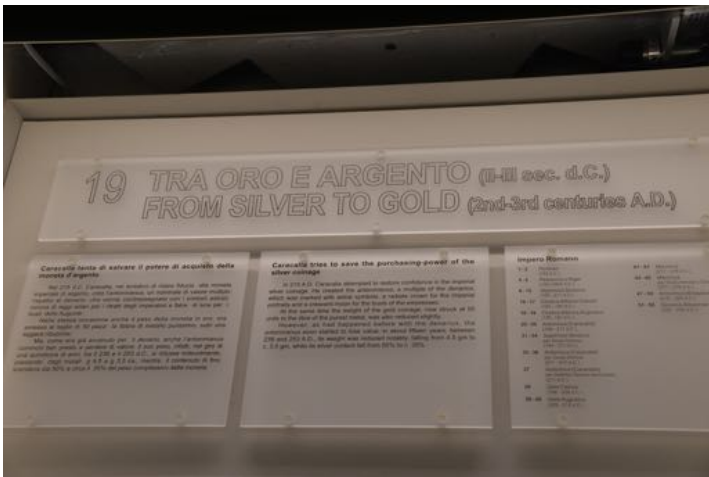
Rome1516_0002458.JPG



Rome1516_0002460.JPG



Rome1516_0002461.JPG



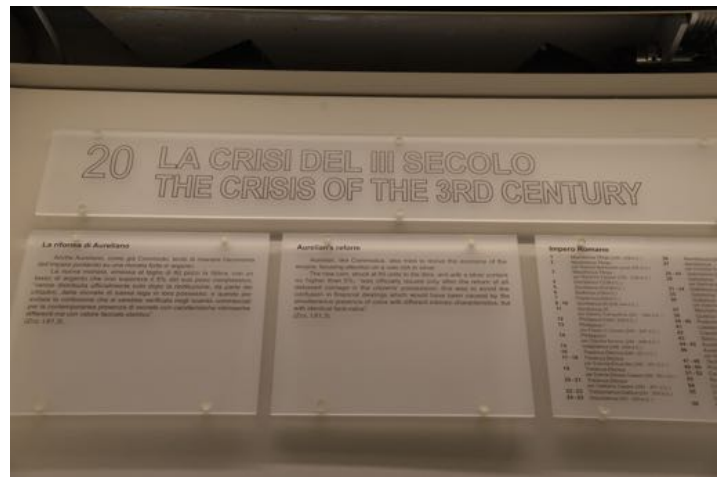
Rome1516_0002464.JPG



Rome1516_0002466.JPG



Rome1516_0002467.JPG



Rome1516_0002469.JPG



Rome1516_0002471.JPG



Rome1516_0002472.JPG



Rome1516_0002473.JPG



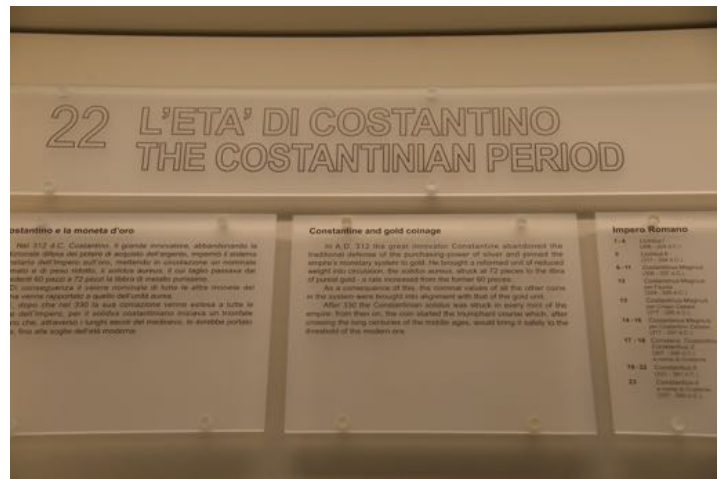
Rome1516_0002474.JPG



Rome1516_0002475.JPG



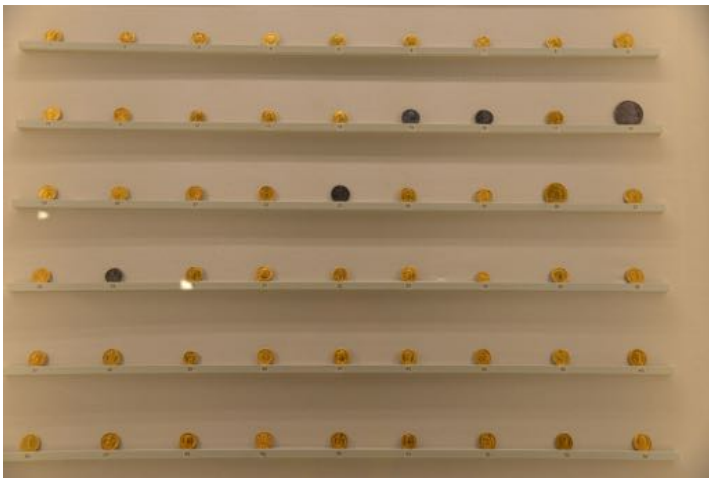
Rome1516_0002477.JPG



Rome1516_0002480.JPG



Rome1516_0002478.JPG



Rome1516_0002482.JPG



Rome1516_0002483.JPG

Impero Romano

1 - 4	<i>Licinius I</i> (308 - 324 d.C.)	24 - 25	<i>Constantius II</i> per Costanzo Gallo Cesare (351 - 354 d.C.)
5	<i>Licinius II</i> (317 - 324 d.C.)	26 - 29	<i>Magnentius</i> (350 - 353 d.C.)
6 - 11	<i>Costantinus Magnus</i> (306 - 337 d.C.)	30	<i>Magnentius</i> per Decenzio Cesare (351 - 353 d.C.)
12	<i>Costantinus Magnus</i> per Fausta (324 - 326 d.C.)	31 - 34	<i>Iulianus II</i> (Giuliano II l'Apostata) (360 - 363 d.C.)
13	<i>Costantinus Magnus</i> per Crispo Cesare (317 - 326 d.C.)	35 - 36	<i>Iovianus</i> (363 - 364 d.C.)
14 - 16	<i>Costantinus Magnus</i> per Costantino Cesare (317 - 337 d.C.)	37 - 40	<i>Valentinianus I</i> (364 - 375 d.C.)
17 - 18	<i>Constans, Costantinus II,</i> <i>Constantius II</i> (337 - 340 d.C.) a nome di Costante	41 - 44	<i>Valens</i> (364 - 378 d.C.)
19 - 22	<i>Constantius II</i> (337 - 361 d.C.)	45 - 47	<i>Gratianus</i> (367 - 383 d.C.)
23	<i>Constantius II</i> a nome di Costante (337 - 350 d.C.)	48 - 50	<i>Valentinianus II</i> (375 - 392 d.C.)
		51 - 52	<i>Theodosius I</i> (379 - 395 d.C.)
		53	<i>Magnus Maximus</i> (383 - 388 d.C.)
		54	<i>Eugenius</i> (392 - 394 d.C.)

Rome1516_0002484.JPG



Rome1516_0002485.JPG



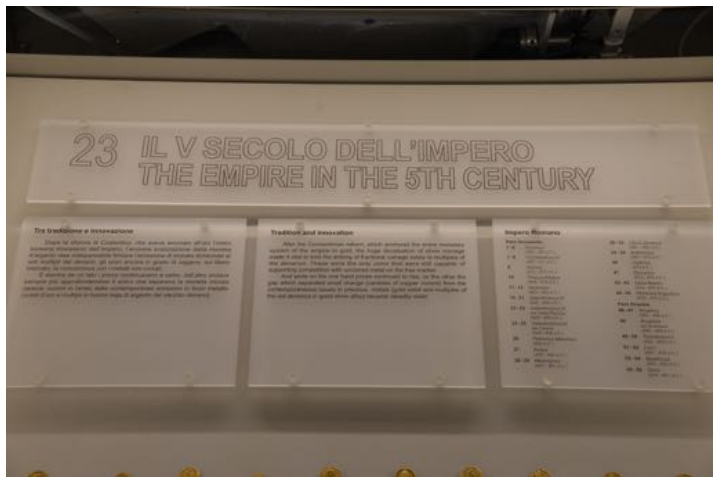
Rome1516_0002486.JPG



Rome1516_0002487.JPG



Rome1516_0002488.JPG



Rome1516_0002489.JPG



Rome1516_0002491.JPG



Rome1516_0002492.JPG



Rome1516_0002493.JPG



Rome1516_0002495.JPG



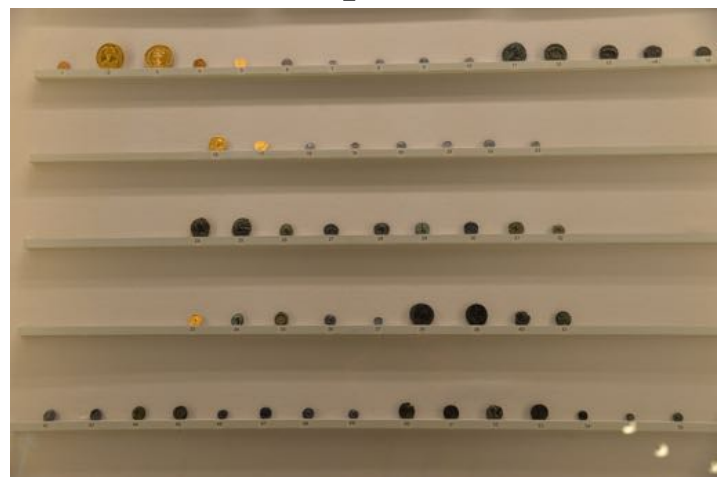
Rome1516_0002496.JPG



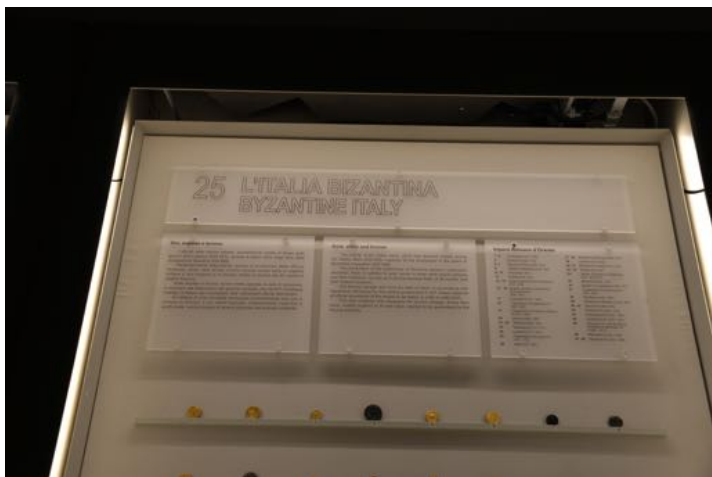
Rome1516_0002497.JPG



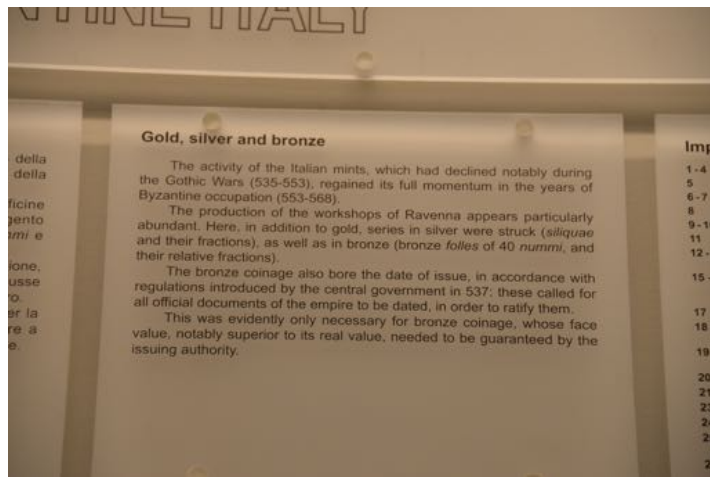
Rome1516_0002499.JPG



Rome1516_0002501.JPG



Rome1516_0002502.JPG



Rome1516_0002503.JPG



Rome1516_0002504.JPG



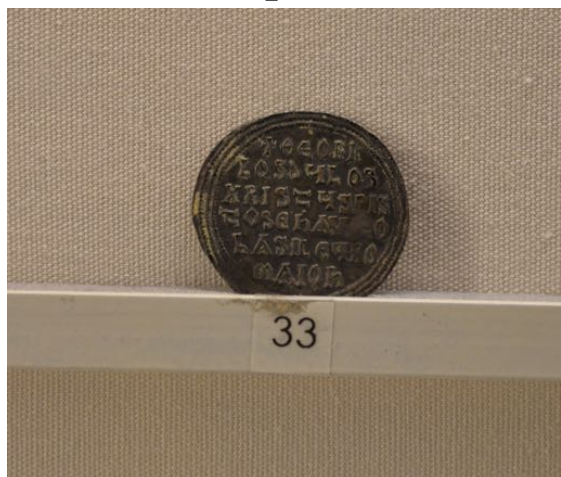
Rome1516_0002505.JPG



Rome1516_0002506.JPG



Rome1516_0002507.JPG



Rome1516_0002508.JPG



Rome1516_0002509.JPG



Rome1516_0002511.JPG



Rome1516_0002512.JPG



Rome1516_0002513.JPG

manifestazione concreta del potere sovrano temporale del successore di Pietro.
 La loro coniazione ebbe termine con la chiusura della zecca di Roma all'epoca di Benedetto VII (975-983).

Rome: from empire to papacy

During the long years of first Gothic and then Lombard dominion, the Roman mint never stopped issuing Byzantine-type gold coinage. Towards the end of the 8th century, Pope Hadrian I (772-795) started to strike the first silver *denari* of Frankish type. These were small coins of low fineness struck jointly in the name of the pontiff (whose stylised image was impressed on the blanks) and the Frankish sovereign.

The issue at this time of such coins, which did not leave the Papal States' internal market, took on weighty political significance as a clear manifestation of the temporal, sovereign power of the successors of Saint Peter.

The striking of the coins stopped with the closure of the Roman mint at the time of Pope Benedict VII (975-983).

Rome1516_0002514.JPG



Rome1516_0002515.JPG

Stato della Chiesa

1 Zaccaria III (742 - 753)	22 Giovanni VIII e Ludovico II (872 - 880)	39 Benedetto IV e Ludovico II (900 - 903)
2 - 3 Adriano I (772 - 795)	23 - 24 Giovanni VIII e Carlo il Grosso (880 - 882)	40 Sergio III (904 - 911)
4 Leone III e Carlo Magno (795 - 816)	25 Marino I e Carlo il Grosso (882 - 884)	41 Anastasio III (911 - 913)
5 Leone III e Ludovico I (814 - 816)	26 - 27 Stefano V e Carlo il Grosso (882 - 884)	42 Giovanni X e Berengario (914 - 928)
6 Pasquale I e Ludovico I (817 - 834)	28 Stefano V (888 - 891)	43 Agostino II e Alberico principe (948 - 956)
7 Eugenio II e Ludovico I (824 - 827)	29 Stefano V e Guido di Spoleto (891)	44 - 45 Giovanni XII e Ottone I (955 - 964)
8 Valentino e Ludovico I (827)	30 Formoso e Guido di Spoleto (891 - 896)	46 Leone VIII antipapa e Ottone I (963 - 965)
9 - 10 Gregorio IV e Ludovico I (828 - 868)	31 Formoso e Arnolfo (893 - 896)	47 Leone VIII antipapa (963 - 965)
11 Gregorio IV e Lotario I (840 - 844)	32 - 33 Stefano VI e Arnolfo (896)	48 Benedetto V e Ottone I (964 - 965)
12 Sergio II e Lotario I (844 - 847)	34 Stefano VI e Lamberto (897)	49 Giovanni XIII e Ottone I (965 - 972)
13 Sergio II e Ludovico I (844 - 847)	35 Romano I e Lamberto (897)	50 Benedetto VI e Ottone I (972 - 974)
14 - 15 Leone IV e Lotario I (847 - 855)	36 Teodoro II e Lamberto (897 - 898)	51 Bonifacio VII antipapa e Ottone II (974)
16 - 17 Benedetto III e Ludovico II (855 - 858)	37 Giovanni IX e Lamberto (898 - 900)	52 - 53 Benedetto VII e Ottone II (974 - 984)
18 - 19 Niccolò I e Ludovico II (858 - 867)	38 Benedetto IV (900 - 903)	54 Giovanni XIV (984 - 985)
20 - 21 Adriano II e Ludovico II (867 - 872)		55 Leone IX e Enrico III (1049 - 1059)

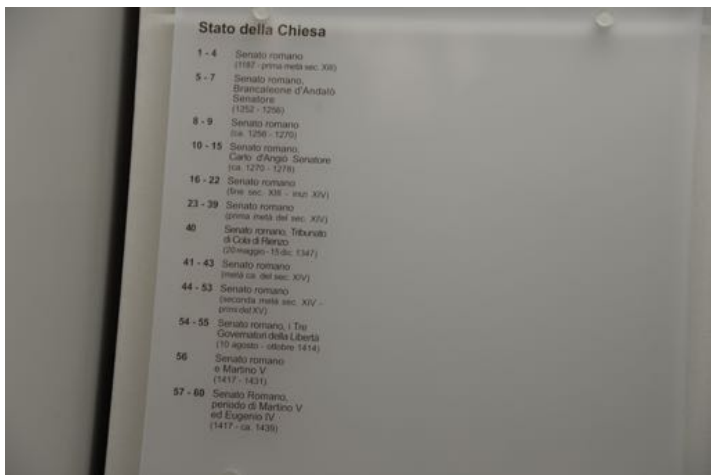
Rome1516_0002516.JPG



Rome1516_0002518.JPG



Rome1516_0002519.JPG



Rome1516_0002521.JPG



Rome1516_0002522.JPG



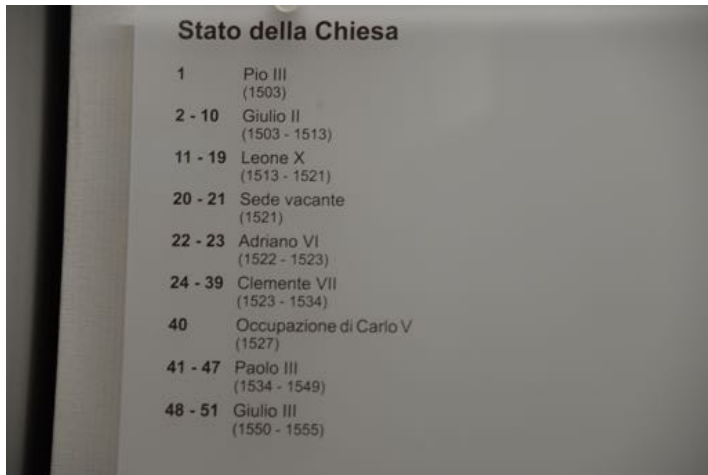
Rome1516_0002527.JPG



Rome1516_0002528.JPG



Rome1516_0002529.JPG



Rome1516_0002530.JPG



Rome1516_0002531.JPG



Rome1516_0002532.JPG

... Stato Pontificio, a differenza di quanto accadeva in molti altri Stati italiani dove si contava in lire, soldi e denari, i conti venivano tenuti in scudi, giuli (o paoli) e baiocchi. Lo scudo di conto era diviso in 10 giuli o 100 baiocchi.

Coined money, money of account

In the middle of the 16th century the old gold coins still in circulation, that is, ducati and fiorini di Camera, were definitively substituted by gold scudi, struck at a standard of 22 carats. Since they had the same metrological characteristics as those issued by Spain, France, and, in Italy, Venice, Genoa, Florence and Naples, these were known as *scudi delle sette stampe*.

Amongst the large silver coins, struck to a fineness of 916.66 parts to the thousand, should be mentioned the *piastre*, which had a value of 10 giuli (minted for the first time during the pontificate of Sixtus V, 1585-1590), the *testoni*, with the value of 3 giuli, and the *giuli* (or *paoli*).

Whereas the money of account in most Italian states consisted of lire, soldi, and denari, that in the Papal States consisted of scudi, giuli, (or paoli) and baiocchi. The scudo was divided into 10 giuli, or 100 baiocchi.

Rome1516_0002533.JPG



Rome1516_0002534.JPG



Rome1516_0002535.JPG



Rome1516_0002536.JPG

1	Marcello II (1555)
2 - 4	Paolo IV (1555 - 1559)
5 - 6	Pio IV (1559 - 1565)
7 - 10	Pio V (1566 - 2572)
11 - 25	Gregorio XIII (1572 - 1585)
26 - 36	Sisto V (1585 - 1590)
37	Sede vacante (1590)
38	Sede vacante (1591)
39 - 44	Clemente VIII (1592 - 1605)
45	Leone XI (1605)
46 - 56	Paolo V (1605 - 1621)
57 - 58	Gregorio XV (1621 - 1623)
59 - 60	Sede vacante (1623)

Rome1516_0002537.JPG



Rome1516_0002538.JPG



Rome1516_0002539.JPG



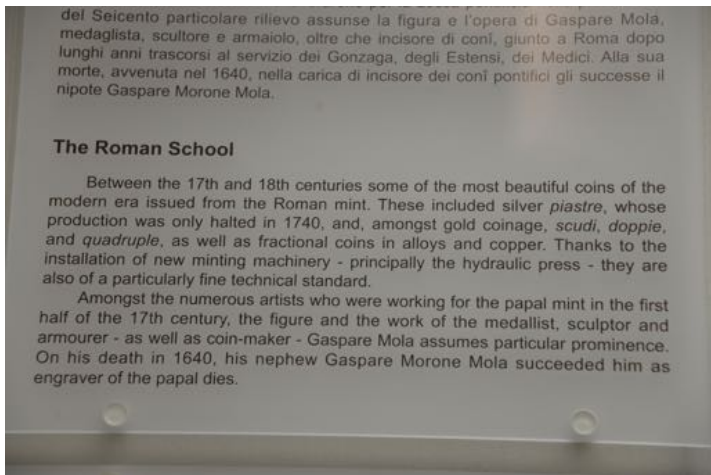
Rome1516_0002540.JPG



Rome1516_0002541.JPG



Rome1516_0002542.JPG



Rome1516_0002543.JPG



Rome1516_0002544.JPG



Rome1516_0002545.JPG



Rome1516_0002546.JPG



Rome1516_0002547.JPG



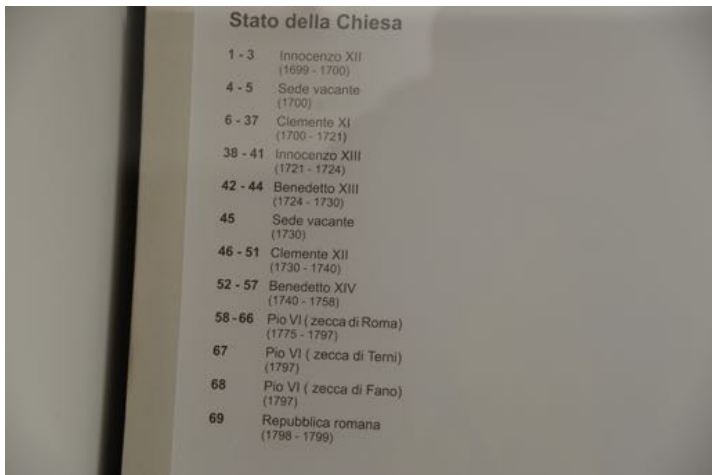
Rome1516_0002548.JPG



Rome1516_0002551.JPG



Rome1516_0002552.JPG



Rome1516_0002553.JPG



Rome1516_0002555.JPG



Rome1516_0002556.JPG



Rome1516_0002557.JPG



Rome1516_0002558.JPG



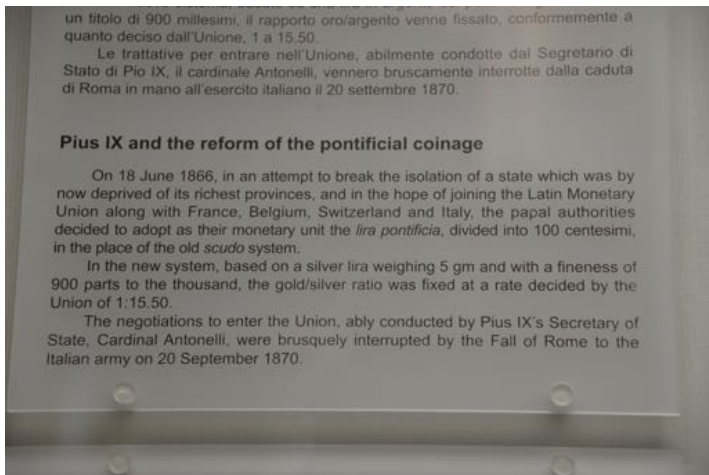
Rome1516_0002560.JPG



Rome1516_0002561.JPG



Rome1516_0002562.JPG



Rome1516_0002563.JPG



Rome1516_0002564.JPG



Rome1516_0002565.JPG



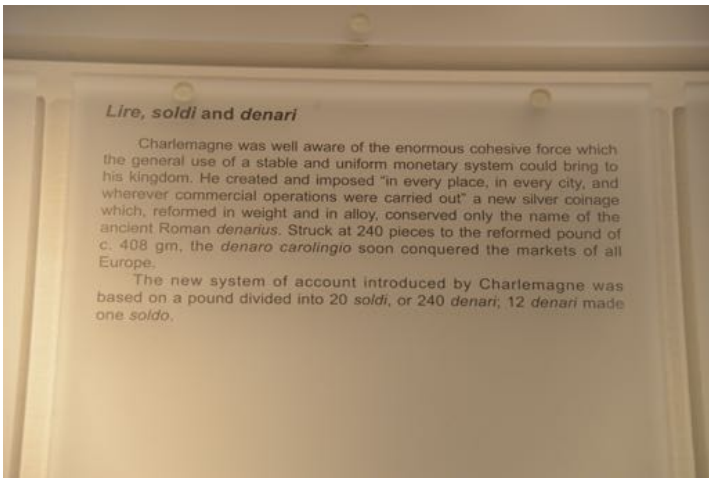
Rome1516_0002566.JPG



Rome1516_0002567.JPG



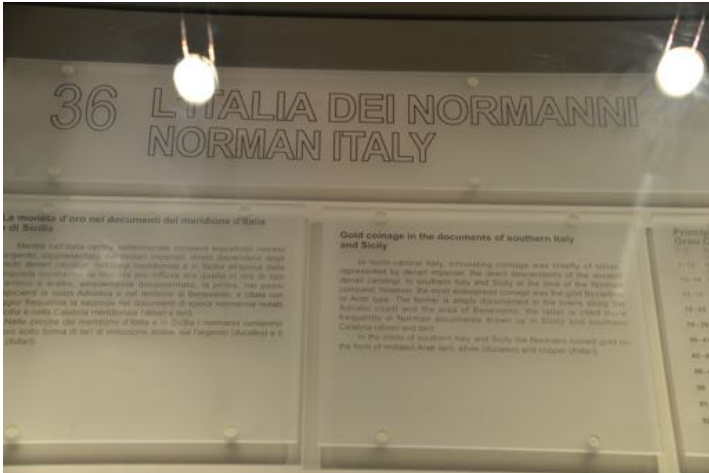
Rome1516_0002568.JPG



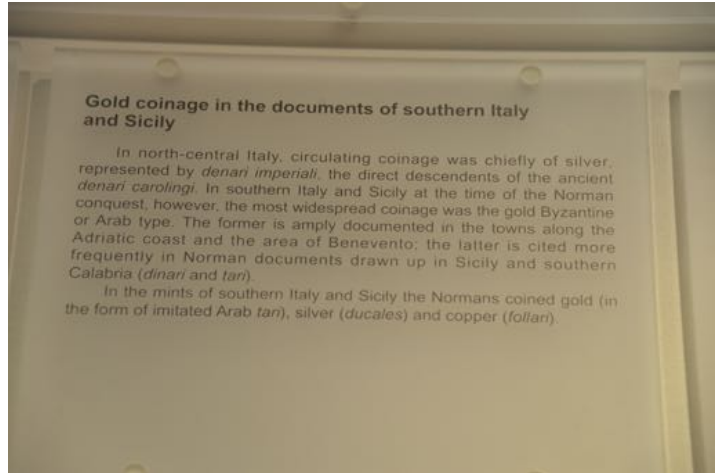
Rome1516_0002570.JPG



Rome1516_0002571.JPG



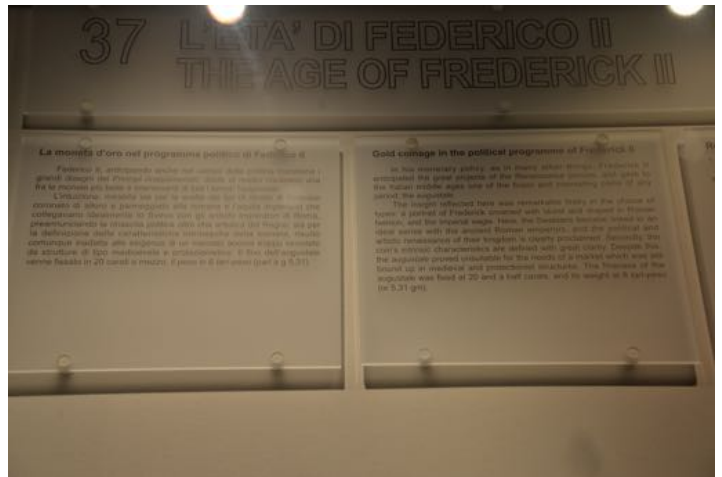
Rome1516_0002572.JPG



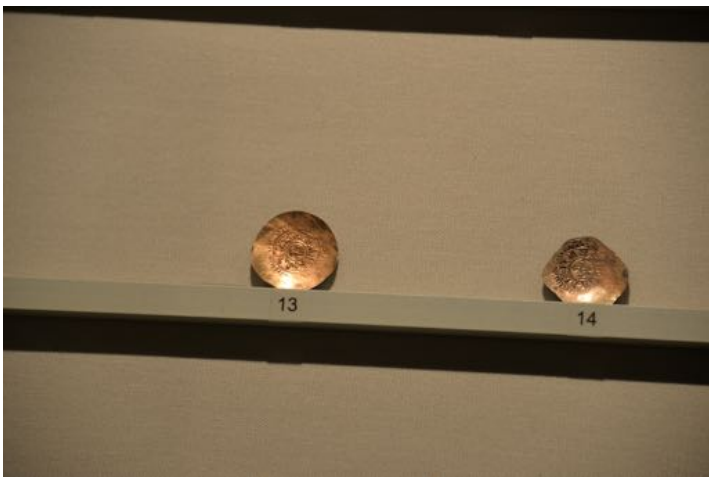
Rome1516_0002573.JPG



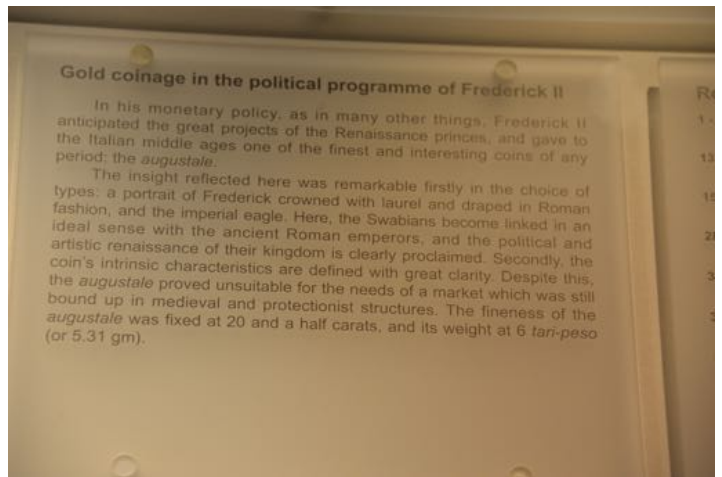
Rome1516_0002574.JPG



Rome1516_0002576.JPG



Rome1516_0002577.JPG



Rome1516_0002578.JPG



Rome1516_0002579.JPG



Rome1516_0002580.JPG



Rome1516_0002581.JPG



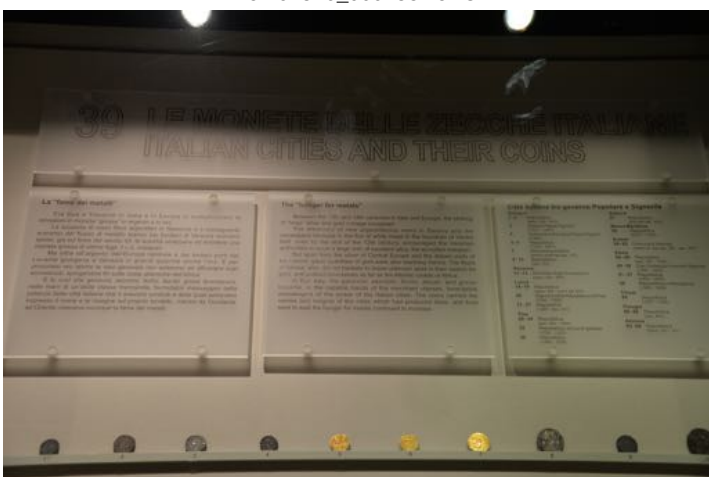
Rome1516_0002583.JPG



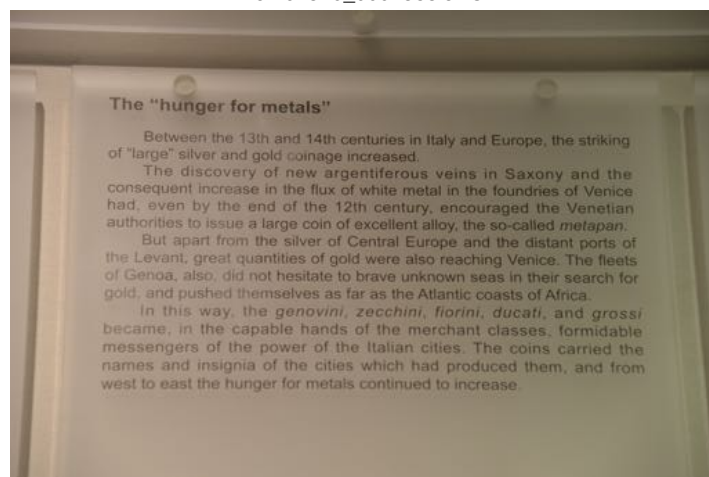
Rome1516_0002584.JPG



Rome1516_0002585.JPG



Rome1516_0002587.JPG



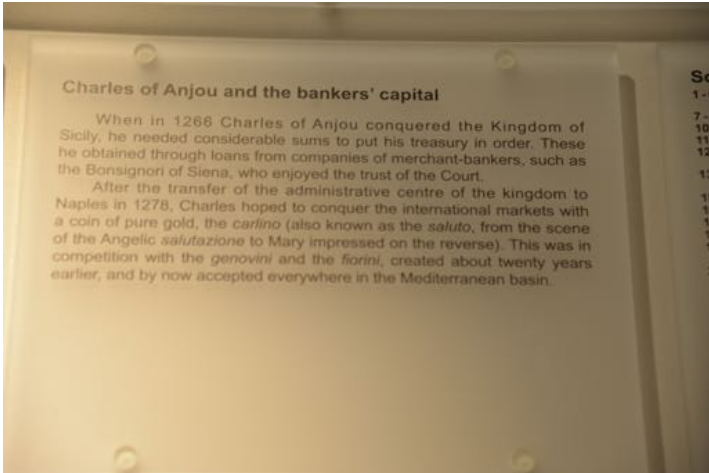
Rome1516_0002588.JPG



Rome1516_0002589.JPG



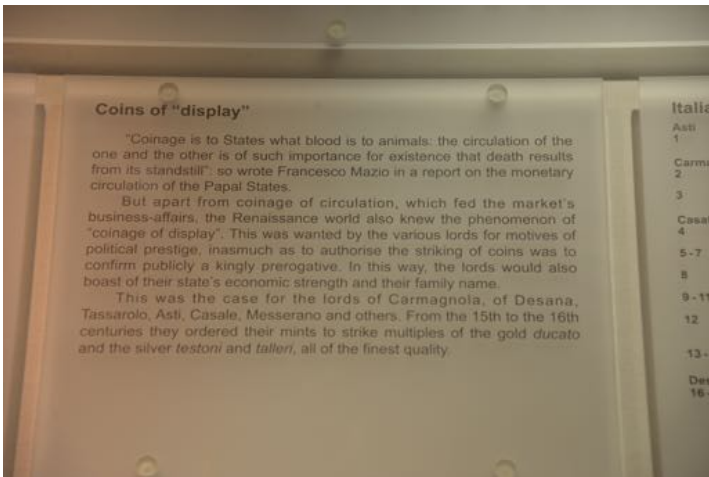
Rome1516_0002590.JPG



Rome1516_0002592.JPG



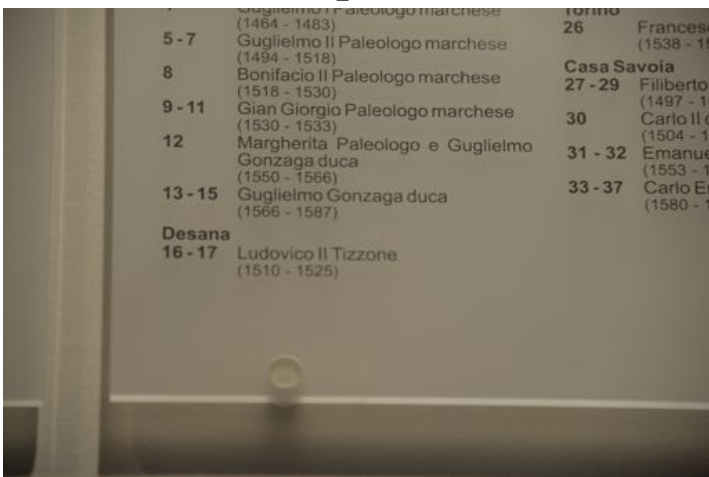
Rome1516_0002594.JPG



Rome1516_0002597.JPG



Rome1516_0002598.JPG



Rome1516_0002599.JPG



Rome1516_0002600.JPG

Marchese di Saluzzo 4)	Passerano 25	Zecca dei Radicati Conti di Cocconato (1581 - 1598)
di Foix 4)	Torino 26	Francesco I re di Francia (1538 - 1542)
il Paleologo marchese 8)	Casa Savoia 27 - 29	Filiberto II duca (1497 - 1504)
il Paleologo marchese 8)	30	Carlo II duca (1504 - 1553)
gio Paleologo marchese 3)	31 - 32	Emanuele Filiberto duca (1553 - 1580)
a Paleologo e Guglielmo duca 36)	33 - 37	Carlo Emanuele I duca (1580 - 1630)
Gonzaga duca 37)		
Il Tizzone 35)		

Rome1516_0002601.JPG

Portrait art on the coins of the Sforza

The first to take the great step forward was Francesco Sforza in 1462: no one before him had ordered their own portrait engraved on the coins of the Duchy of Milan - not even the last of the Visconti, who had, however, been portrayed on medals by Pisanello.

Subsequently, we see a flowering of carefully-modelled images made by artists whose names are often unknown to us, artists who rose in the shadow of the great masters who were frequenting the Sforza court at the time - most famously Leonardo da Vinci, called to the capital of Lombardy by Ludovico il Moro.

Rome1516_0002603.JPG



Rome1516_0002604.JPG



Rome1516_0002605.JPG



Rome1516_0002607.JPG



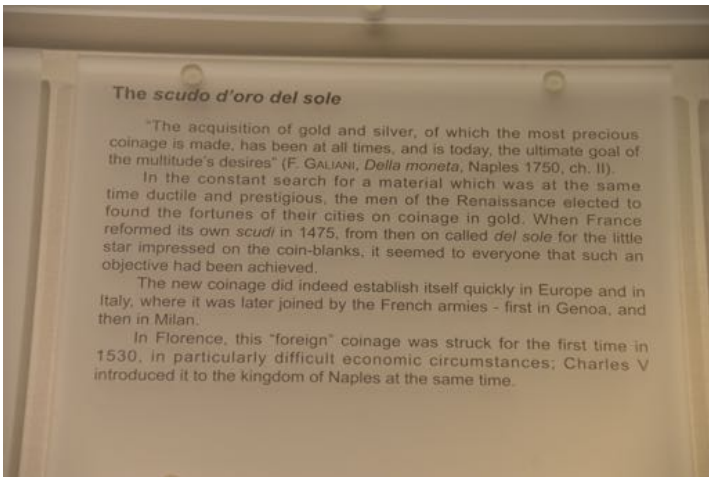
Rome1516_0002608.JPG



Rome1516_0002609.JPG

Ducato di Milano		Mantova	
1 - 3	Francesco I Sforza (1450 - 1466)	38 - 40	Ludovico II marchese (1444 - 1478)
4 - 11	Galeazzo Maria Sforza (1466 - 1476)	41	Federico I marchese (1478 - 1484)
12 - 13	Gian Galeazzo Maria Sforza (1476 - 1494)	42 - 47	Francesco II marchese (1484 - 1519)
14 - 18	Gian Galeazzo Maria Sforza e Ludovico Maria Sforza (1490 - 1494)	48 - 50	Federico II marchese (1519 - 1530)
19 - 20	Ludovico Maria Sforza (detto "il Moro") (1494 - 1499)	51	Federico III duca (1530 - 1540)
21 - 25	Luigi XII re di Francia (1500 - 1512)	52 - 53	Francesco III duca di Mantova e marchese del Monferrato (1540 - 1550)
26	Francesco I re di Francia (1515 - 1521)	54	Guglielmo Gonzaga (1550 - 1567)
27	Francesco II Sforza (1521 - 1535)		
28 - 37	Carlo V imperatore (1535 - 1556)		

Rome1516_0002610.JPG



Rome1516_0002612.JPG



Rome1516_0002613.JPG



Rome1516_0002614.JPG



Rome1516_0002615.JPG



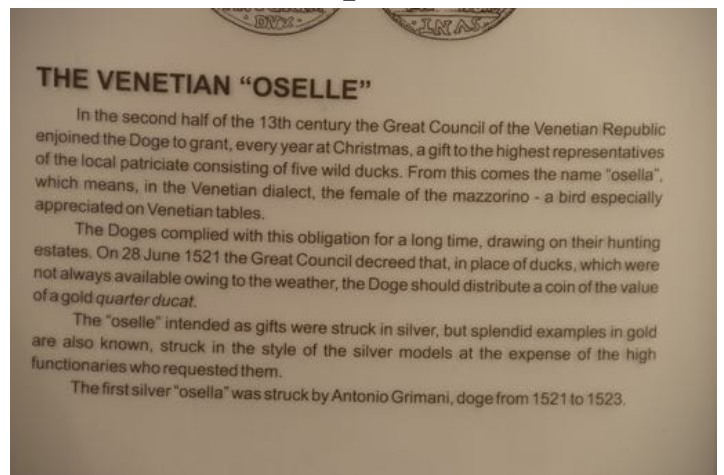
Rome1516_0002616.JPG



Rome1516_0002617.JPG



Rome1516_0002621.JPG



Rome1516_0002622.JPG



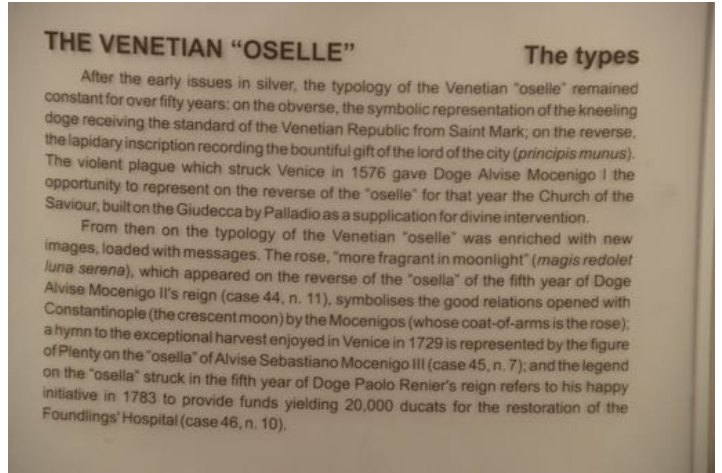
Rome1516_0002623.JPG



Rome1516_0002624.JPG



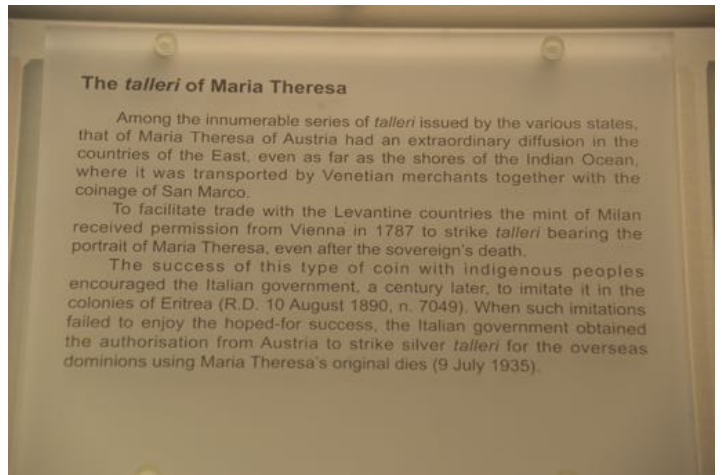
Rome1516_0002625.JPG



Rome1516_0002626.JPG



Rome1516_0002628.JPG



Rome1516_0002630.JPG



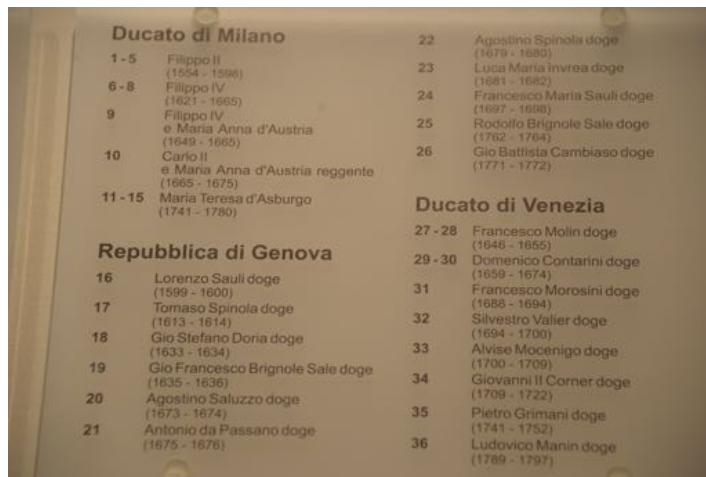
Rome1516_0002631.JPG



Rome1516_0002632.JPG



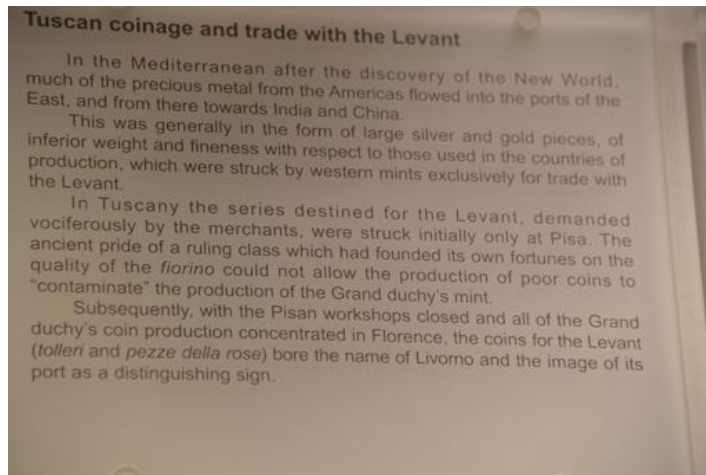
Rome1516_0002633.JPG



Rome1516_0002634.JPG



Rome1516_0002635.JPG



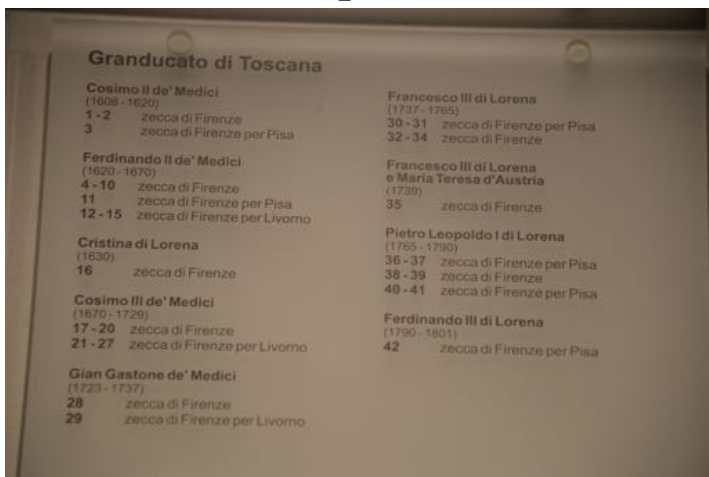
Rome1516_0002636.JPG



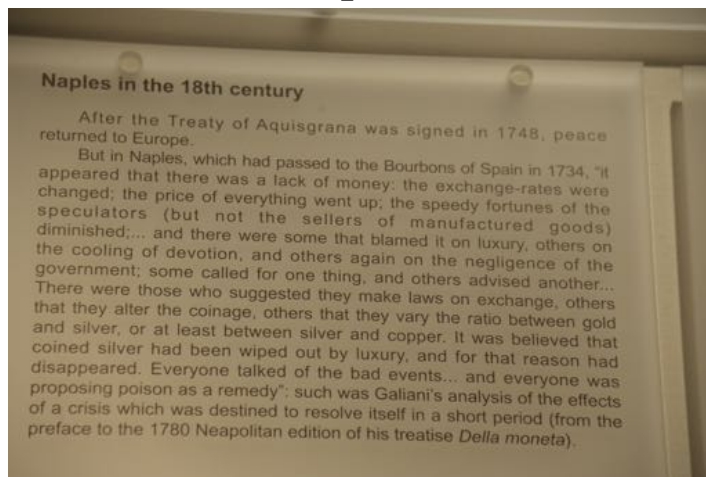
Rome1516_0002638.JPG



Rome1516_0002639.JPG



Rome1516_0002640.JPG



Rome1516_0002641.JPG



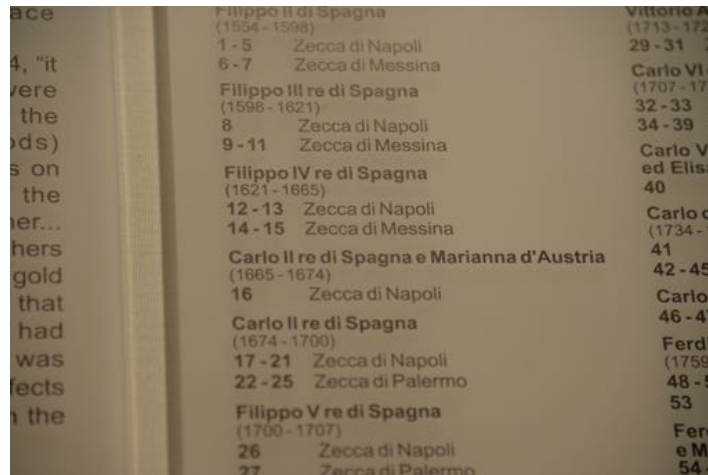
Rome1516_0002642.JPG



Rome1516_0002643.JPG



Rome1516_0002645.JPG



Rome1516_0002646.JPG



Rome1516_0002647.JPG



Rome1516_0002648.JPG